

BIGTOYO INDUSTRIAL AIR COMPRESSORS

- DURABILITY
- RELIABILITY
- PERFORMANCE



大東揚機械股份有限公司
BIG TOYO MACHINERY CO., LTD.

BIGTOYO INDUSTRIAL AIR COMPRESSORS

Rotary screw air compressors designed for reliability, durability and performance

When your operation depends on compressed air, reliability matters. Bigtoyo offers a dynamic range of oil flooded industrial air compressors you can rely on at any step of your operation.

Broad industrial compressor lineup

- Power: 10– 150 hp (7.5– 110 kW)
- Flow: 35– 700 cfm (1 – 20 m³/min)
- Pressure: 100 – 140 psi (7 – 10 bar)

Features

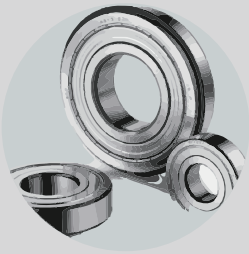
- Energy Saving
Driven by high-efficiency permanent magnet synchronous motor for energy saving
- AI
Uses variable frequency drive to control motor speed, automatically reduces motor power, and saves electricity
- DURABLE
Oil-lubricated screw compressor head with heat-treated alloy steel material and precision grinding
Reduces operating noise, increases air flow, and extends service life

Peripherals

- Air receiver: Stores compressed air and provides a stable pressure supply.
- Precision filters: Includes cyclone separators, primary, secondary, and precision filters, and can be selected according to specific needs.
- Air-cooled dryers: Utilizes a refrigeration method to remove moisture from compressed air.
- Adsorption filters: Extreme water filtration devices used for high-end coating applications.



BIGTOYO INDUSTRIAL AIR COMPRESSORS



Modular Design

Energy Saving

High Performance

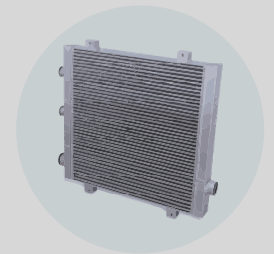


High Efficiency



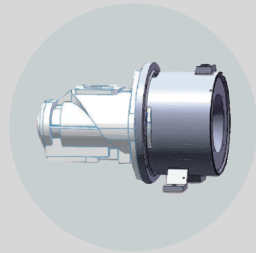
High Reliability

Light Weight



Simple Control

Broad Applicability



SPECIFICATIONS

Model	Power(kW)	Pressure (Bar)	Airflow	Noise	Outlet	Size (mm)	Weight (kg)
HCV10	7.5	8	1.2	60±2	3/4"	1000*600*1000	280
HCV20	15	8	2.4	63±2	1"	1150*800*1280	450
HCV30	22	8	3.6	66±2	1 1/4"	1150*800*1280	620
HCV50	37	8	6.4	68±2	1 1/2"	1300*1000*1450	850
HCV75	55	8	9.7	69±2	2"	1850*1270*1600	1200
HCV100	75	8	13.2	70±2	2"	1850*1270*1600	1350
HCV150	110	8	20	76±2	3"	2000*1700*1820	2200



大東揚機械股份有限公司
BIG TOYO MACHINERY CO., LTD.

INDUSTRIAL AIR COMPRESSOR SETS

Compressor Set

Horsepower	10HP Set	20HP Set	30HP Set	50HP Set	75HP Set	100HP Set	150HP Set
 <p>Air Compressor</p>	HCV-10	HCV-20	HCV-30	HCV-50	HCV-75	HCV-100	HCV-150
 <p>Cyclone Separator</p>	CS-10	CS-20	CS-30	CS-50	CS-75	CS-100	CS-150
	CS-10-DV	CS-20-DV	CS-30-DV	CS-50-DV	CS-75-DV	CS-100-DV	CS-150-DV
 <p>Air Tank</p>	AT-360L	AT-660L	AT-1000L	AT-1260L	AT-1500L	AT-2000L	AT-2000L
 <p>C Grade Filter</p>	HC-010C	HC-020C	HC-030C	HC-050C	HC-075C	HC-100C	HC-150C
	HC-010C-DV	HC-020C-DV	HC-030C-DV	HC-050C-DV	HC-075C-DV	HC-100C-DV	HC-150C-DV
 <p>Air Dryer</p>	ACD-10	ACD-20	ACD-30	ACD-50	ACD-75	ACD-100	ACD-150
 <p>T Grade Filter</p>	HC-010T	HC-020T	HC-030T	HC-050T	HC-075T	HC-100T	HC-150T
 <p>A Grade Filter</p>	HC-010A	HC-020A	HC-030A	HC-050A	HC-075A	HC-100A	HC-150A





Initial Maintenance:

Timing: 500 hours

Subsequent Maintenance:

Timing: Every 1000-1500 hours

The maintenance schedule alternating between "small maintenance" and "major maintenance".

- **Small maintenance services involve replacing the engine oil, oil filter, and air filter.**
- **Major maintenance services include replacing all the items mentioned in small maintenance, along with the oil-air separator.**

